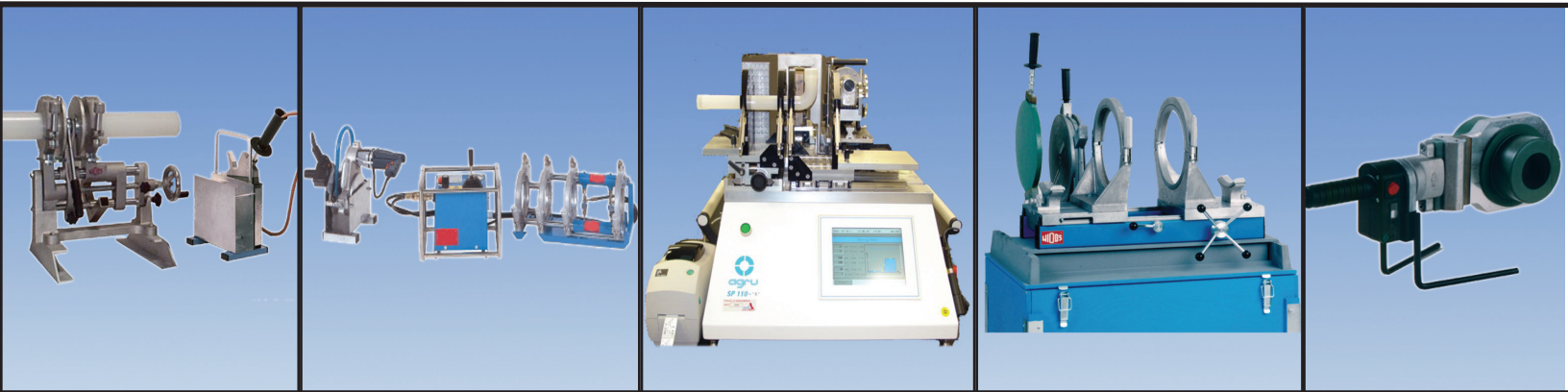


Welding Equipment Catalog #WEC-12



**Another
Corrosion
Problem
Solved.TM**



Butt Fusion Shop Welders

Miniplast: Shop 4, Maxiplast: Shop 6.....	Page 3
Shop 12 Manual (W2500) , Halar® Bench 6 (W900).....	Page 4

Hydraulic Trench Machines

Trench 6 (W4400) , Trench 12 (W4900).....	Page 5
Trench 20 (W5500).....	Page 6

Socket Fusion Welders

Bench Socket 4 (W3500).....	Page 7
Ritmo Hand Held Socket 2, Widos Weld-it® Hand Socket.....	Page 8

Electrofusion Welder & Accessories

The Polymatic.....	Page 9
Hot Air Welder, Extrusion Gun and Blower.....	Page 10
Rotational Scraper 110 & 225, Pipe Beveller SME-1.....	Page 11

I/R High Purity Welders

SP 110-S: Fully Automated Welding IR Fusion.....	Page 12
SP 250-S: Fully Automated Welding IR Fusion.....	Page 12
SP 315-S: Fully Automated Welding IR Fusion.....	Page 13
Power Transformer.....	Page 14

Beadless Welder

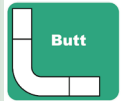
SP 110-B: Fully Automated Beadless Fusion.....	Page 15
HPF Portable Beadless Fusion.....	Page 15

Piping Systems

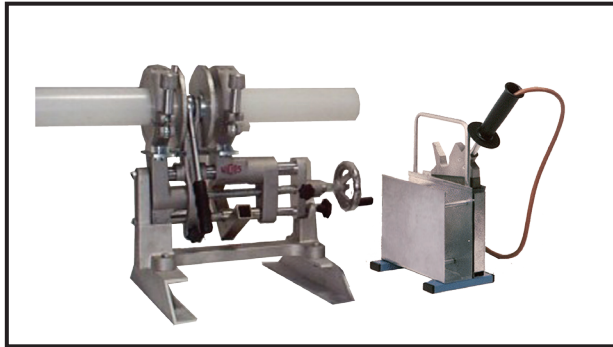
Industrial Piping Systems.....	Page 16
High Purity Piping Systems.....	Page 17
Double Containment Piping Systems.....	Page 17

Miniplast: Shop 4

Part Number 5730000



Compact Manual Butt Fusion



Size Range	20mm - 110mm (1/2" - 4")
Piping	Single & Double Wall
Materials	PE, PP, PVDF
Power	110v
Dimensions	21"x27"x19"
Weight	100 lbs.
Shipping Dimensions	48"x40"x23"
Shipping Weight	150 lbs.

Features

- Welds 20mm - 110mm (1/2" - 4")
- Horizontal and vertical adjustment
- Compact design
- Ability to make angle welds and miter joints
- Reversible planer blades (2 pc/set)
- Built-in force gauge
- Ideal for shop or field operation

Options

- IPS Inserts 1/2" - 3"
- 1x3 annular heating element
- 2x4 annular heating element
- Electric planer
- 1x2, 2x3 Polyflo inserts

Maxiplast: Shop 6

Part Number 5622000



Manual Butt Fusion



Size Range	50mm - 160mm (1-1/2" - 6")
Piping	Single & Double Wall
Materials	PE, PP, PVDF
Power	110v
Dimensions	36"x25"x38"
Weight	250 lbs.
Shipping Dimensions	48"x40"x35"
Shipping Weight	300 lbs.

Features

- Welds 50mm - 160mm (1-1/2" - 6")
- Horizontal and vertical adjustment
- Compact design
- Ability to make angle welds and miter joints
- Electric planer standard
- Built-in force gauge
- Ideal for shop or field operation

Options

- Reversible planer blades (4 pc/set)
- 125mm, 140mm inserts
- 3 x 6 annular mirror
- IPS inserts 1-1/2" - 6"
- 1x2, 2x3, 4x6 Polyflo inserts

Please consult Asahi/America's Welding Equipment Price Sheet for purchase and rental rates for all equipment and options.

Shop 12 Manual (W2500)

Part Number 5722000



Manual Butt Fusion



Size Range 50mm - 315mm (1-1/2" - 12")
Piping Single & Double Wall
Materials PE, PP, PVDF
Power 110v

Dimensions 38"x27"x41"
Weight 475 lbs.
Shipping Dimensions 48"x40"x45"
Shipping Weight 625 lbs.

Features

- Handy and mobile plastic welding machine
- Ideal for PE, PP, and PVDF
- Suitable for sanitary installations & waste pipes
- Built-in force gauge
- Ideal for shop operation

Options

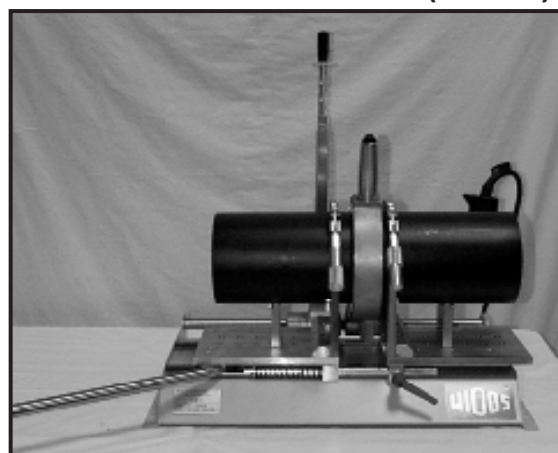
- IPS inserts 3" - 10"
- 3x6, 4x8, 6x10, 8x12 annular heating element
- Reversible planer blades (4 pc/set)
- 2x3, 4x6 Polyflo inserts

Halar® Bench 6 (W900)

Part Number 5773000



Manual Butt Fusion for Halar® (E-CTFE)



Size Range 50mm - 160mm (1-1/2" - 6")
Piping Single Wall
Materials Halar® (E-CTFE)
Power 110v

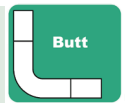
Dimensions 32"x21"x36"
Weight 180 lbs.
Shipping Dimensions 33"x23"x36"
Shipping Weight 180 lbs.

Features

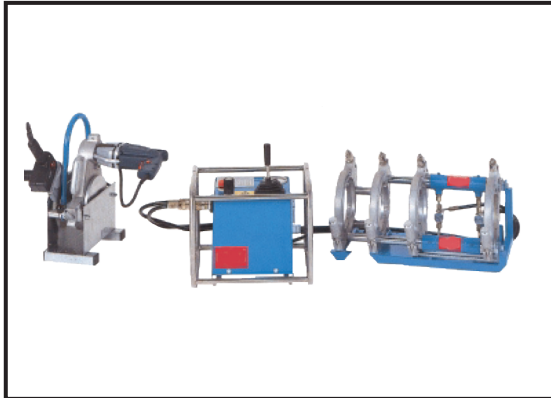
- Welds 20mm - 160mm (1/2 - 6")
- High temp heating plate for Halar® welds
- Lever action for quick change over time
- Thin master clamps for keeping tight fabrication dimensions
- Built-in force gauge
- Ideal for shop or field operation

Trench 6 (W4400)

Part Number 5792000



Compact Trench Butt Fusion



Size Range	50mm - 160mm (1-1/2" - 6")
Piping	Single & Double Wall
Materials	PE, PP, PVDF
Power	230 Single
Dimensions	25"x14"x14"
Weight	50 lbs.
Shipping Dimensions	33"x33"x26"
Shipping Weight	320 lbs.

Features

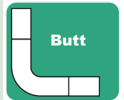
- Compact design, ideal for inside trenches
- Rugged frame for industrial applications
- Adjustable speed to control change over time
- Adjustable heating element temperatures
- Powerful planer with safety shut-off switch
- Lever actuated operation
- Vertical or horizontal welds

Options

- IPS inserts 1-1/2" - 4"
- 1x2, 2x3, 4x6 Polyflo inserts
- Reversible planer blades (2 pc/set)

Trench 12 (W4900)

Part Number 5793000



Trench Butt Fusion



Size Range	90mm - 315mm (3" - 12")
Piping	Single & Double Wall
Materials	PE, PP, PVDF
Power	230 Single
Dimensions	34"x22"x22"
Weight	114 lbs.
Shipping Dimensions	40"x48"x24"
Shipping Weight	900 lbs.

Features

- Compact design, ideal for inside trenches
- Rugged frame for industrial applications
- Adjustable speed to control change over time
- Adjustable heating element temperatures
- Powerful planer with safety shut-off switch
- Lever actuated operation
- Vertical or horizontal welds

Options

- IPS inserts 3" - 10"
- 2x3, 4x6 Polyflo inserts
- Reversible planer blades (2 pc/set)
- Built-in force gauge
- IPS version available 3" - 12" IPS

Trench 20 (W5500)

Part Number 5676000



Trench Butt Fusion



Size Range	200mm - 500mm (8" - 20")
Piping	Single & Double Wall
Materials	PE, PP, PVDF
Power	230 3ph
Dimensions	48"x38"x38"
Weight	300 lbs.
Shipping Dimensions	54"x50"x69
Shipping Weight	1545 lbs

Features

- Compact design, ideal for inside trenches
- Rugged frame for industrial applications
- Adjustable speed to control change over time
- Adjustable heating element temperatures
- Powerful planer with safety shut-off switch
- Lever actuated operation
- Vertical or horizontal welds

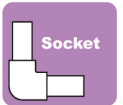
Options

- IPS inserts 8" - 18"
- Reversible planer blades (2 pc/set)

Please consult Asahi/America's Welding Equipment Price Sheet
for purchase and rental rates for all equipment and options.

Bench Socket 4 (W3500)*

Part Number 5711000



Bench Top Socket Welding Machine



Size Range	20mm - 110mm (1/2" - 4")
Piping	Single Wall
Materials	PE, PP, PVDF
Power	110v
Dimensions	32"x27"x33"
Weight	240 lbs.
Shipping Dimensions	32"x27"x33"
Shipping Weight	240 lbs.

Features

- Welds 20mm -110mm (1/2" - 4")
- Ideal for PE, PP, PVDF
- Socket fusion
- Motion of the slides is controlled by a rack-and-pinion mechanism
- Heating element is built into the machine
- Adjustable stop assures quality welds through size range
- Ideal for shop operation

Options

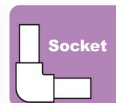
- Heater, spigot, bushing, peeling and chamfer tools
- IPS available

* Notes

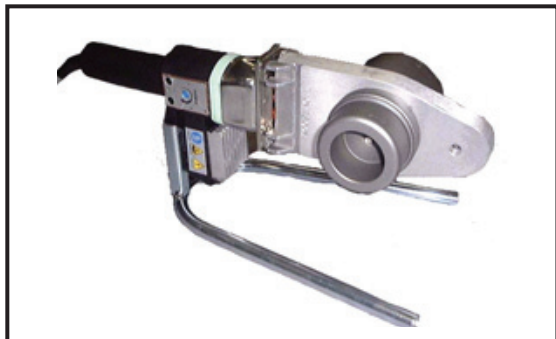
- Heater inserts included with purchase (please specify metric or IPS upon order)
- Heater inserts must be purchased for rental machines

Please consult Asahi/America's Welding Equipment Price Sheet
for purchase and rental rates for all equipment and options.

Ritmo Hand Held Socket 2* Part Number 5687001



Hand Held Socket Fusion Tool



Size Range	20mm - 63mm (1/2" - 2")
Piping	Single Wall
Materials	PE, PP, PVDF
Power	110v
Dimensions	18"x14"x5-1/2"
Weight	15 lbs.

Features

- Welds 20mm -63mm (1/2" - 2")
- Lightest welding tool in our fleet
- Convenient table clamp
- Ideal for shop or field operation

Options

- Heater, spigot, bushing, peeling and chamfer tools
- IPS available

* Notes

- Heater inserts included with purchase
- Heater inserts must be purchased for rental machines

Widos Weld-it® Hand Socket* Part Number 5687002



Hand Held Socket Fusion Tool



Size Range	20mm - 63mm (1/2" - 2")
Piping	Single Wall
Materials	PE, PP, PVDF
Power	110v
Dimensions	15"x6"
Weight	3.75 lbs.
Weight w/case	15 lbs.

Features

- Welds 20mm -63mm (1/2" - 2")
- Lightweight, durable hand tool
- 2 receptacles for sockets and spigots
- Adjustable heating element, with digital indicator
- Equipped with 20mm-63mm spigots & sockets
- Table top holder included, for "hands free" welding
- Ideal for shop or field operation

Options

- Heater, spigot, bushing, peeling and chamfer tools
- IPS available

* Notes

- Heater inserts included with purchase
- Heater inserts must be purchased for rental machines

Please consult Asahi/America's Welding Equipment Price Sheet
for purchase and rental rates for all equipment and options.

Polymatic*

Part Number 5830000



Electrofusion Welder



Size Range	All electrofusion fittings up to 48 volt
Piping	Single Wall
Materials	PE, PP
Power	110v
Dimensions	21"x27"x19"
Weight	40 lbs.
Shipping Dimensions	21"x27"x19"
Shipping Weight	150 lbs.

Features

- All electrofusion fittings up to 48 volt
- Parameters are set using a bar code
- Safe and reliable fusion
- Tough thermoplastic housing that resists damage due to moisture
- Ideal for shop or field operation

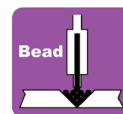
*** Notes**

- Requires pipe scraper
- Scraper is included, must specify size (see page 11)

Please consult Asahi/America's Welding Equipment Price Sheet
for purchase and rental rates for all equipment and options.

Hot Air Welder*

Part Number 5638000



Manual Hand Held Bead Welding Tool



Size Range

3mm-4mm

Piping

Single Wall

Materials

PFA, PVC, PE, PP, PVDF, E-CTFE

Power

110v

Dimensions

21"x27"x19"

Weight

5 lbs.

Shipping Dimensions

21"x27"x19"

Shipping Weight

5 lbs.

Features

- Built in motor with air cooler
- Adjustable from 20 - 600°C (68-1112°F)
- Ideal for shop or field operation

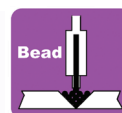
Options

- Round tip
- Combo speed/taking tip
- Spare heating unit

* Requires welding rod

Extrusion Gun and Blower*

Part Number 9640000



Manual Hand Held Extrusion Welding Tool



Available for Rental Only

Rob Size Range

3-5mm (1/8" - 3/16")

Piping

Single Wall

Materials

PE, PP, PVDF, E-CTFE

Power

230v (gun) 115v (blower)

Dimensions

21" length

Weight

70 lbs.

Shipping Dimensions

31"x19"x12" (gun)

23"x18"x14" (blower)

Shipping Weight

120 lbs.

Features

- Built in motor with w/variable welding speed
- Adjustable from 20 - 600°C (68-1112°F)
- Ideal for shop or field operation

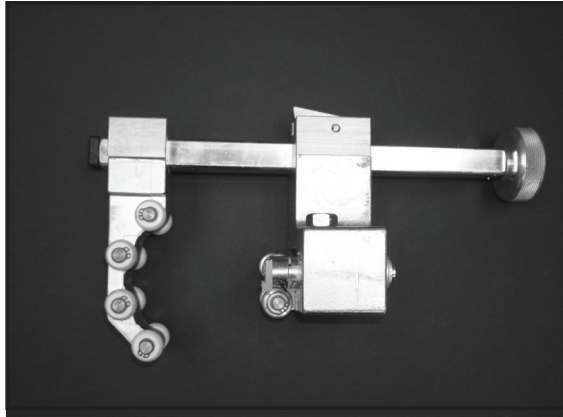
* Requires welding rod

Rotational Scrapers

PFR 110 - Part Number 5831110

PFR 225 - Part Number 5832225

Electrofusion Scraping Tool

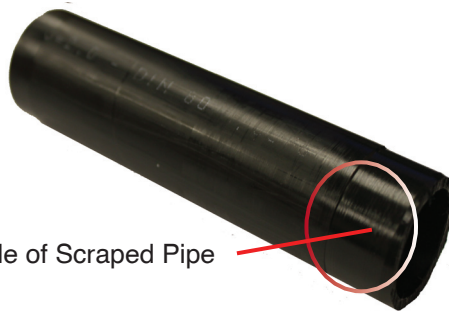


Asahi/America offers a wide range of scraping tools for a variety of sizes and applications. Please consult us for the best recommendation.

Size Ranges	PFR 110	25mm - 110mm (3/4" - 4")
	PFR 225	90mm - 225mm (3" - 9")

Note:

Not for use with socket welding

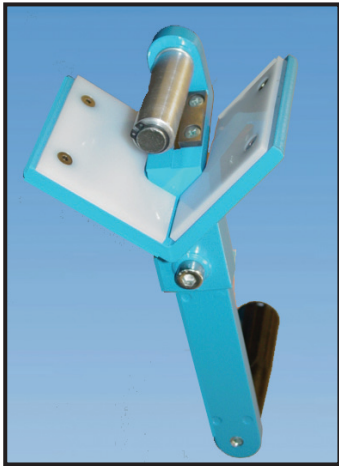


Example of Scraped Pipe

Pipe Beveller SME-1

Part Number 5686003

Beveling Tool



The SME-1 tool is ideal for beveling the ends of plastic pipes up to 63mm (2") that will be inserted into socket fusion coupling.



Example of Bevelled Pipe

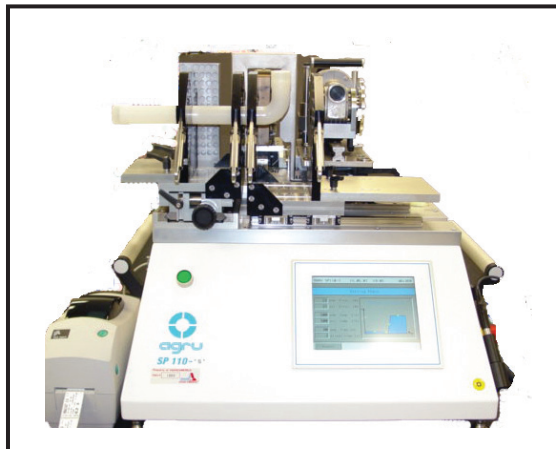
Please consult Asahi/America's Welding Equipment Price Sheet for purchase and rental rates for all equipment and options.

SP 110-S

Part Number 5861001



Fully Automated IR Butt Welding Tool



Size Range	20mm - 110mm (1/2" - 4")
Piping	Single Wall
Materials	PP, PPn, PVDF, E-CTFE
Power	Plug-110v Tool-230v
Dimensions	29-9/16x35-3/8x25
Weight	198 lbs.
Shipping Dimensions	61"x39"x40"
Shipping Weight	670 lbs.

Features

- Automated planing depth feature
- Automated fusion process
- Internal validation program
- Printer and cleanroom labels
- 110 to 230 VAC power converter
- Ideal for shop operation

Options

- PFA capable tool
- SP 110-S operator card
- 110 to 230 VAC power converter

SP 250-S

Part Number 5869001



Fully Automated IR Butt Welding Tool



Size Range	110mm - 250mm (4" - 10")
Piping	Single Wall
Materials	PP, PVDF
Power	400 3ph
Dimensions	36"x56"x58"
Weight	1635 lbs.
Shipping Dimensions	37"x56"x58"
Shipping Weight	1785 lbs.

Features

- Automated planing depth feature
- Automated fusion process
- Internal validation program
- Printer and cleanroom labels
- Ideal for shop operation

Options

- SP 250-S operator card
- 208 to 400 power converter (see page 14)

SP 315-S

Part Number 5869315



Fully Automated IR Butt Welding Tool



Size Range	110mm - 315mm (4" - 12")
Piping	Single Wall
Materials	PP, PVDF
Power	400 3ph
Dimensions	46"x62"x56"
Weight	2420 lbs.
Shipping Dimensions	42"x67"x58"
Shipping Weight	2620 lbs.

Features

- Automated planing depth feature
- Automated fusion process
- Internal validation program
- Printer and cleanroom labels
- Ideal for shop operation

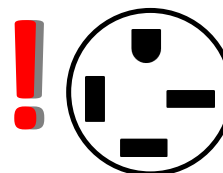
Options

- SP 315-S operator card
- 208 to 400 power converter (see page 14)

Please consult Asahi/America's Welding Equipment Price Sheet
for purchase and rental rates for all equipment and options.

Power Transformer - For use w/SP 250-S &SP 315-S**Power**

208 3ph

Required receptacle
208, 3 phase**Dimensions**

23-3/4"x21-4/5"x21"

Weight

180 lbs.

Shipping Dimensions

30"x26"x37"

Shipping Weight

295 lbs.

Terms of useage

- Use with a dedicated line
- Must be wired by a licensed electrician
- Contact Asahi/America for further information on installation
- Must be ordered at time of tool rental
- Ideal for shop operation

Specifications	Isolation
Subcategory	Three
Phase	60
Frequency (Hz)	15
kVA	1
K Rating	Delta
Primary configuration	Wye
Secondary configuration	Yes
Reverse connectable	Copper
Winding material	No
Electrostatic shielded	10 kV
BIL rating	150
Temperature rise	220
Insulation system	NEMA 3R
Enclosure rating	Steel
Enclosure material	Enclosed - Ventilated Core & Coil
Construction style	Floor or Wall
Mounting type	Lugs/Bolt down Terminals
Connection type	Air/Dry
Cooling	Yes
UL listed	Yes
CSA approved	Yes

Output Amps	
at 380v	22.79A
at 400v	21.65A
at 415v	20.87A

Please consult Asahi/America's Welding Equipment Price Sheet
for purchase and rental rates for all equipment and options.

SP 110-B*

Part Number 5786100



Beadless Welding Fusion Machine



Size Range	20mm - 63mm (1/2" - 2")
Piping	Single Wall
Materials	PP, PPn, PVDF
Power	110v
Dimensions	26-9/16x35-3/8x25
Weight	198 lbs.
Shipping Dimensions	61"x39"x40"
Shipping Weight	670 lbs.

Features

- Internal validation program
- Provides several QA sources
- Printer and cleanroom labels
- 110 to 230 VAC power converter
- Ideal for shop operation

Options

- Balloons for PP or PVDF
- SP 110-B operator card

* Requires Balloons

HPF Portable Beadless*

Part Number 5786000



Powersource for PVDF electrofusion fittings



Size Range	20mm - 63mm (1/2" - 2")
Piping	Single Wall
Materials	PVDF
Power	110v
Dimensions	26"x19"x17"
Weight	100 lbs.
Shipping Dimensions	43"x37"x28"
Shipping Weight	365 lbs.

Features

- Extremely portable
- 7 foot cable leads that are able to reach difficult areas
- Bar code entry sets parameters for each diameter
- Internal bead is eliminated using an inflatable balloon

Options

- Balloons for PP or PVDF

* Requires Balloons

Industrial Piping Systems



(PE)

Supply Range Pipe and Fittings

- 20 - 315mm (1/2" - 12")
SDR11, 150 psi



Valves

- T-21 Ball Valves: 20 - 63mm (1/2" - 2")
- T-57 Butterfly Valves: 50 - 315mm (1-1/2" - 12")
- T-14 Diaphragm Valves: 20 - 63mm (1/2" - 2")
- Ball Check Valves: 20 - 63mm (1/2" - 2")

Welding

- Butt, Socket, Electrofusion

Proline® (PP)

Supply Range Pipe and Fittings

- 20 - 1200mm (1/2" - 48")
SDR11, 150psi
- 110 - 1400mm (4" - 55")
SDR33, 45psi



Valves

- T-21 Ball Valves: 20 - 110mm (1/2" - 4")
- T-57 Butterfly Valves: 50 - 1400mm (1-1/2" - 55")
- T-14/15/G Diaphragm Valves: 20 - 200mm (1/2" - 10")
- Ball Check Valves: 20 - 110mm (1/2" - 4")
- Frank Series Regulating Valves: 20 - 110mm (1/2" - 4")

Welding

- Butt, Socket, Electrofusion

Ultra Proline® (Halar®)

Supply Range Pipe and Fittings

- 20 - 50mm (1/2" - 1-1/2")
SDR21, 150psi
- 63-110mm (2" - 4")
SDR21, 120psi



Valves

- T-21 Ball Valves: 20 - 32mm (1/2" - 1")
- T-342 Diaphragm Valves: 20 - 63mm (1/2" - 2")
- Frank Series Regulating Valves: 20 - 63mm (1/2" - 2")

Welding

- Butt

Super Proline® (PVDF)

Supply Range Pipe and Fittings

- 20 - 315mm (1/2" - 12")
SDR21, 230 psi
- 90 - 400mm (3" - 16")
SDR33, 150 psi



Valves

- T-21 Ball Valves: 20 - 110mm (1/2" - 4")
- T-57 Butterfly Valves: 50 - 315mm (1-1/2" - 12")
- T-14 Diaphragm Valves: 20 - 63mm (1/2" - 4")
- Ball Check Valves: 20 - 110mm (1/2" - 4")
- Frank Series Regulating Valves: 20 - 75mm (1/2" - 2-1/2")

Welding

- Butt, Socket

Air-Pro®

Compressed Air Piping

Supply Range Pipe and Fittings

- 20 - 110mm (1/2" - 4")
SDR 7.4 / 230 psi
- 160 - 315mm (6" - 12")
SDR 11 / 160 psi



Valves

- Ball Valves: 20 - 90mm (1/2" - 3")

Welding

- Butt, Socket, Electrofusion

Purad® (Ultra High Purity PVDF)

Supply Range

Pipe and Fittings

- 20 - 315mm (1/2" - 12")
SDR 21 / PN 16 / 230 psi
- 90 - 315mm (3" - 12")
SDR 33 / PN 10 / 150 psi



Valves

- T-342 Diaphragm Valves: 20 - 110mm (1/2" - 4")
- T-343 Zero Dead Leg (ZDL) Valve: 20 - 110mm (1/2" - 4")
Over 49 different sizes and configurations
- T-21 Ball Valves: 20 - 110mm (1/2" - 4")
- Frank Series Regulating Valves: 20 - 75mm (1/2" - 2-1/2")

Welding

- IR/Butt, Socket, Beadless, Electrofusion

PolyPure® (Natural PP)

Supply Range

Pipe and Fittings

- 20 - 110mm (1/2" - 4")
SDR 11 / PN 10 / 150 psi



Valves

- T-342 Diaphragm Valves: 20 - 63mm (1/2" - 2")
- T-343 Zero Dead Leg (ZDL) Valve: 20 - 63mm (1/2" - 2")
- Ball Valves: 20 - 63mm (1/2" - 2")
- 3" and 4" Valves: Only available in PP

Welding

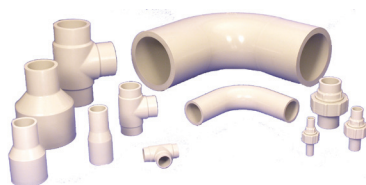
- IR/Butt, Socket, Beadless

PP-Pure® (Pigmented PP)

Supply Range

Pipe and Fittings

- 20 - 315mm (1/2" - 12")
SDR 11 / PN 10 / 150 psi



Valves

- T-342 Diaphragm Valves: 20 - 110mm (1/2" - 4")
- T-343 Zero Dead Leg (ZDL) Valve: 20 - 63mm (1/2" - 2")
- T-21 Ball Valves: 20 - 110mm (1/2" - 4")

Welding

- IR/Butt, Beadless

Duo-Pro®

Supply Range

- 1x3 through 16x20

Materials: Polypropylene, PVDF, & E-CTFE (Halar®)



Welding

- Simultaneous or Staggered Butt

Poly-Flo®

Supply Range

- 1x2, 2x3, or 4x6

Materials: Black Polypropylene & HDPE



Welding

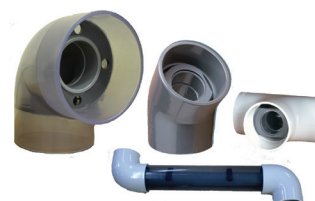
- Simultaneous or Staggered Butt

Pro-Lock®

Supply Range

- 1/2x2 through 4x8

Materials: PVC & CPVC



Assembly

- Simultaneous or Staggered Glue

Fluid-Lok®

Supply Range

- 1x3 through 18x24

Materials: HDPE



Welding

- Simultaneous or Staggered Butt

Welding Equipment Rental Policy

All rental equipment requires a rental agreement to be signed and completed at the time of order prior to shipping. Rental agreement is to be signed by distributor only.

Please allow 4-5 days from receipt of PO to process all rental equipment orders for shipment.

Freight: Customer pays freight from factory to the job site and job site to factory. NO exceptions. Asahi will attempt to combine machines with freight allowed pipe orders but won't guarantee this service.

Rental Rates:

- Daily Rates- Are per day, excluding weekends or National holidays.
- Weekly Rates-Are per calendar week or any part of it. We will not prorate partial weeks.
- Monthly Rates-Consist of 4 week period (28 day cycle).
- Partial months-Less than 2 weeks (14 days) will be billed per week at the monthly rate divided by 4.
Greater than 2 weeks (15 + days) will carry the full monthly charge.

Asahi/America Welding Equipment Freight Insurance Policy Clarification

Due to the high value of these machines, and the sensitivity of the computers and electronics on them, damage during transportation can become very expensive. Asahi/America recommends insuring all welding equipment to the full replacement value and always accept the package from freight carriers with "possible concealed damage".

The condition of the welding equipment is the responsibility of Asahi until it leaves our facility. All rental and purchased equipment is photographed as packaged for freight pick up. Asahi is not responsible for the condition of the tool upon arrival on site. Asahi will offer customer assistance with procuring this machine insurance at time of order if requested. Customers can also choose their own carriers and insurance companies at time of order, at their cost.

All welding tools/machines are FOB Malden MA, regardless of whether they are for purchase or rental. All freight costs for all machines are the responsibility of the customer. This includes to and from the job site for rental equipment.

Asahi is always willing to work with our customers to keep costs down in today's competitive market. Tool freight costs can be minimized if tools ship with material orders that meet the standard "freight allowed" policy. (Tools ship with orders based on availability) Insurance protocols will still be in effect for automated tools even if shipped with material orders.

If you have any questions regarding this policy please contact your District Manager, or call Customer Service at our Malden, MA headquarters at 1-800-343-3618

Please consult Asahi/America's Welding Equipment Price Sheet
for purchase and rental rates for all equipment and options.

Warranty TERMS AND CONDITIONS

1. Asahi/America, Inc. ("Asahi") hereby gives notice of its objection to any different or additional terms and conditions except for any such items and conditions as may be expressly accepted by it in writing. The terms and conditions herein **are the final expression of the parties' agreement** and shall supersede any provisions, terms and conditions contained on any confirmation order or other writing buyer may give or receive and rights of the parties shall be governed exclusively by the terms and conditions hereof.
2. Buyer's confirmation is accepted for merchandise selection purpose only. All orders are subject to acceptance by Asahi at its Malden, Massachusetts office and Asahi reserves the right to reject any order in whole or in part without incurring any liability to buyer or any branch or division thereof for such order as may be rejected. Asahi shall have the right at its discretion to limit any credit to be extended hereunder or to require payment before delivery. In the event Asahi should be unable to manufacture or decide not to manufacture any product ordered, Asahi shall notify the buyer, but shall not be liable for any non-delivery of such merchandise. Buyer shall, however, accept delivery and pay for all other merchandise that is included on that order.
3. An order once placed with and accepted by Asahi cannot be cancelled or modified by buyer without Asahi's written consent which, if granted, will be subject to terms that will indemnify Asahi against loss.
4. Asahi does not accept in-store completion dates and cancellation dates will not be accepted on made-to-order product once the order has been put into production.
5. Asahi orders (once accepted) may have backorders when necessary. Backorders are not subject to cancellation by buyer unless 30 days past scheduled delivery date.
6. Delivery shall occur and risk of loss shall pass upon delivery of the merchandise sold hereunder to the carrier. Asahi will use buyer's routing guide or instructions after approval from Asahi's Traffic Department. All customers routing are F.O.B. shipping point. Asahi generates one invoice per shipment and does not include invoices with shipment.
7. The buyer agrees that no shipment from Asahi will be returned from a carrier unless damage or shortages are acknowledged and signed by the carrier's driver. All claims for lost or damaged shipments must be made directly by buyer to the delivering carrier at time of delivery. Shortages due to packing errors must be reported in writing within 10 days of receipt to Asahi's Customer Service Department. Adjustments can be made only if reported to Asahi in writing within that time. Buyer's requests for proof of delivery by Asahi must be made within 30 days of receipt of invoice. After 30 days, the merchandise will be considered as delivered.
8. Written approval from Asahi's home office must be obtained before returning defective merchandise as well as unworn, good quality merchandise of any quantity. Approval will be granted only to return unused, good quality merchandise shipped as a result of Asahi error. All returns must be sent prepaid. Upon approval by Asahi, return authorization numbers which must be visible on the outside carton. Returns not carrying return authorization numbers will be refused delivery by Asahi and returned to send at senders expense.
9. Buyer agrees that it will not impose upon Asahi any handling, service or any other charges of **that** nature whatsoever.
10. Asahi will not be liable for any delay in performance of orders or contracts, or in delivery or shipment of goods, or for any damage suffered by buyer by reason of such delay in performance of orders or contracts, or in delivery or shipment of goods, or for any damage suffered by buyer by reason of such delay, when such delay is directly or indirectly caused by or in any manner arises from fire, flood, accident, riot, act of God, war, governmental interference or embargoes, strikes, labor difficulties, shortage of labor, fuel, power, materials, or supplies, transportation delays or any other cause or causes (whether or not similar in nature to any of these hereinbefore specified) beyond its control. Asahi reserves the right to discontinue product lines and make changes in products offered at any time.
11. Asahi products are intended to be sold in buyer's outlet(s) as addressed on this order. All branches must be separately approved. Transshipping of merchandise to approved branches of an approved account may not take place without the written approval of Asahi's Malden, MA office.
12. Asahi warrants only that the goods described on the face of the purchase order conform to Asahi's customary quality standards for such goods. Otherwise ASAHI MAKES NO WARRANTIES, EXPRESS OR IMPLIED, WHICH EXTEND BEYOND THE DESCRIPTION ON THE FACE OF THE ORDER. Without limiting the generality of the foregoing, ASAHI SPECIFICALLY **EXCLUDES AND DISCLAIMS ANY IMPLIED WARRANTY OR MERCHANTABILITY OR FITNESS FOR A PARTICULAR PURPOSE, APPLICATION OR USE AND ANY IMPLIED WARRANTY AGAINST CLAIMS BY THIRD PARTIES FOR INFRINGEMENT AND THE LIKE. This warranty constitutes the only warranty given, superseding all prior or contemporaneous oral or written representations. No Seller employee or any other person is authorized to modify this warranty or make any warranty in addition to those set forth herein.**
13. **ASAHI MAKES NO WARRANTIES, EITHER EXPRESSED, IMPLIED OR STATUTORY, INCLUDING ANY IMPLIED WARRANTY OR MERCHANTABILITY OR FITNESS FOR A PARTICULAR PURPOSE, APPLICATION OR USE AND ANY IMPLIED WARRANTY AGAINST CLAIMS BY THIRD PARTIES FOR INFRINGEMENT AND THE LIKE FOR PRODUCTS ORDERED TO CUSTOM SPECIFICATIONS BY THE BUYER, THAT ARE EXPERIMENTAL, DEVELOPMENTAL OR PROTOTYPE PRODUCTS.**
14. Buyer's remedies in the event of any breach by Asahi shall be exclusively limited to the return of the goods and repayment of the price. These remedies are the purchaser's exclusive remedies for breach of warranty. In no event shall buyer be entitled to claim any special, incidental, or consequential damages of any nature, including, but not limited to, loss of anticipated profits and injury to persons or property.
15. Payment terms shall be as set forth on the face of Asahi's invoice to buyer. Terms adjustment will be made upon request of buyer only if shipment is made more than 7 days in advance of buyer's requested ship date. Discounts will not be allowed on late payments. Discounts are applicable on merchandise only and not on freight or service charges. An interest charge of 1 1/2% percent per month (an annual rate of 18%) will be charged in states where legal on the unpaid balance owed together with cost of collection including reasonable attorney's costs. Asahi will charge a \$75.00 minimal order requirement on all orders. Any tax or duty imposed by any government will be added to the sales price.
16. Any waiver of any of these terms of sale by Asahi shall not be construed to be a waiver of the terms and conditions hereof as applied to subsequent transactions.
17. Any controversy or claim arising out of or relating to this agreement or that breach thereof shall be governed by the laws of the Commonwealth of Massachusetts. **Any action or suit must be commenced within one year following delivery of the goods.**

Another Corrosion Problem Solved.TM



**35 Green St., Malden, MA 02148
Tel: 800-343-3618; 781-321-5409**

**Direct Sales: East (800) 232-7244
Central (800) 442-7244
West (800) 282-7244**

**Fax: 800-426-7058
www.asahi-america.com
asahi@asahi-america.com**
